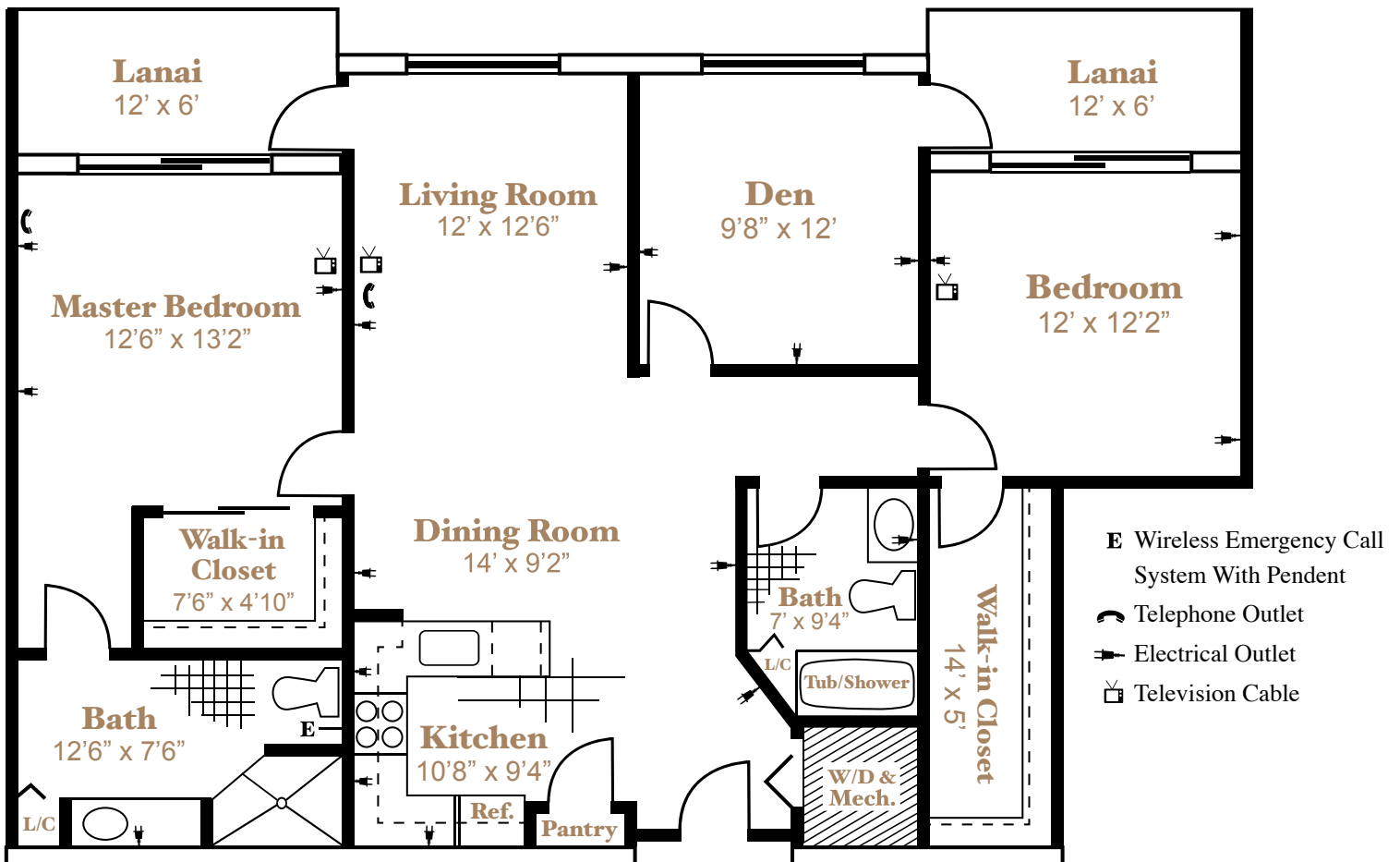




*Luxury
Two-Bedroom
Grand
with Den*

Approximately 1,486 SF



Dimensions may vary

Plan for your future... Call us today!

Call (321) 724-0060 or Toll-Free (800) 742-0060

Standard Apartment Features: Luxury Two-Bedroom Grand with Den

Choice of one color of carpet and paint throughout apartment. Apartment is ADA Adaptable.

Entrance Foyer:

- Ceramic tile floor at the entrance foyer with 6" wood base boards
- Solid core entrance door
- Corridor shelf to personalize the corridor side of the apartment home entry

Living/Dining:

- Ceilings - 9'
- Fully carpeted, with 6" wood base boards
- Ceiling fan with light
- Operable windows with solid surface sills
- Window blinds

Kitchen:

- Large accessible kitchen layout
- Elegant wood veneer 36" custom cabinets and 30" high top cabinets
- Solid surface counter tops
- Pantry closet
- Premium kitchen appliances –
Color: Stainless Steel or White
 - Refrigerator – side by side with water and ice in door
 - Flat stove top range with oven
 - Dishwasher
 - Over range convection microwave with fan/vent unit
 - Garbage disposal
 - Double bowl stainless steel sink

Bedrooms:

- Ceiling - 9'
- Fully carpeted, with 6" wood base boards
- Walk-in closet in master bedroom
- Ceiling fan with light
- Operable windows with solid surface sills
- Window blinds

Master Bath:

- Accessible bathroom layout
- Ceramic tile floor
- Bathroom fixtures
 - Walk-in fiber glass shower with glass enclosure
 - Toilet – 17" raise height, white vitreous china, elongated bowl
 - Solid surface lavatory top with integral bowl and base cabinet
 - Medicine cabinet and mirror

Den:

- Ceilings - 9'
- Fully carpeted, with 6" wood base boards
- Ceiling fan with light
- Operable windows with solid surface sills
- Window blinds

Standard Common Features:

- Screened Lanais
- Stackable Washer and Dryer
- Cable TV
- Pre-wired telephone jacks for telephone and data
- Individually controlled heat and air conditioning
- Emergency power to select lights and outlets
- Wireless Emergency Call System and Personal Pendants
- Emergency power to common areas and elevators
- Climate controlled inside storage
- Audible and visual fire alarms
- Fully sprinkled

Ask about available upgrades!